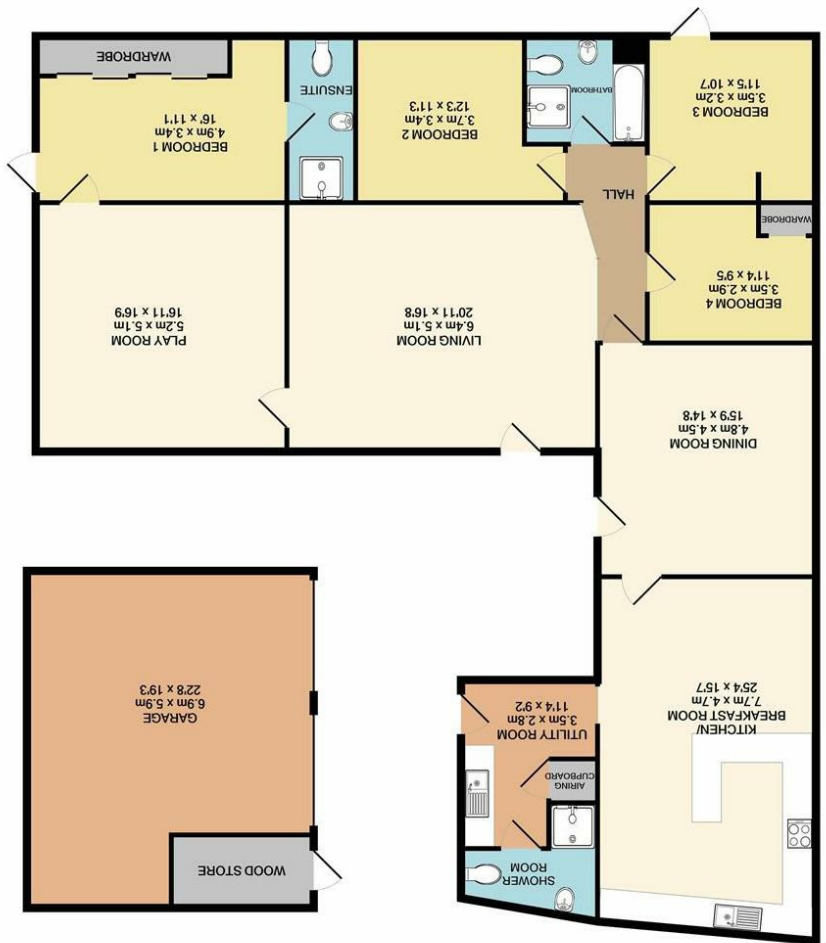


Whilst every attempt has been made to ensure the accuracy of the floor plan contained here, measurements of doors, windows, rooms and any other items are approximate and no responsibility is taken for any error, omission, or misstatement. This plan is for illustrative purposes only and should be used as such by any prospective purchaser. The services, systems and appliances shown have not been tested and no guarantee as to their operability or efficiency can be given.
 Made with Metropix (2021)



Disclaimer - In accordance with the Property Misdescriptions Act, the company gives notice that all descriptions, references to condition, necessary permissions for use and other details are given in good faith and believed to be correct, but any intending lessees do not rely on them as statements of fact, but must satisfy themselves by inspection or other means, as to their accuracy.

England & Wales	
EU Directive 2002/91/EC	
Not energy efficient - higher running costs	
G	(1-20)
F	(21-30)
E	(31-40)
D	(41-50)
C	(51-60)
B	(61-70)
A	(71-80)
Very energy efficient - lower running costs	
A	(91-100)
Current	Potential

Energy Efficiency Rating



Westgate | Norwich | NR10
Offers in excess of £500,000

Norfolk Property online presents this exceptional single storey character home. Having been sympathetically improved and restored by the current owner, this home occupies a favourable position overlooking the green, in the popular village of Hevingham.

Internally, the property blends character charm with modern convenience and offers a light stylish finish throughout. With the property offering four bedrooms, three bathrooms, three reception rooms and a stunning kitchen diner, this is an ideal home for any family.

Externally, the property enjoys a generous, private garden to the rear, with ample off road parking and detached double garage.

Properties of this calibre are rarely available, with an internal viewing essential to appreciate the quality of this home.

